

# WeatherTech®

## Order Form

Accurately measure the floor surface to determine the amount of tiles required.  
Draw out your floor plan on the graph below and determine the tile options and border/corners you desire to create your customized space.

### Room Dimensions

Length: \_\_\_\_\_  
Width: \_\_\_\_\_

### Options

#### Floor Tiles:

- 12" x 12" (package of 10)
- 3" x 12" Left Loop (package of 10)
- 3" x 12" Right Loop (package of 10)
- 6" x 6" (package of 10)
- 3" x 3" (package of 4)

#### Trim Tiles:

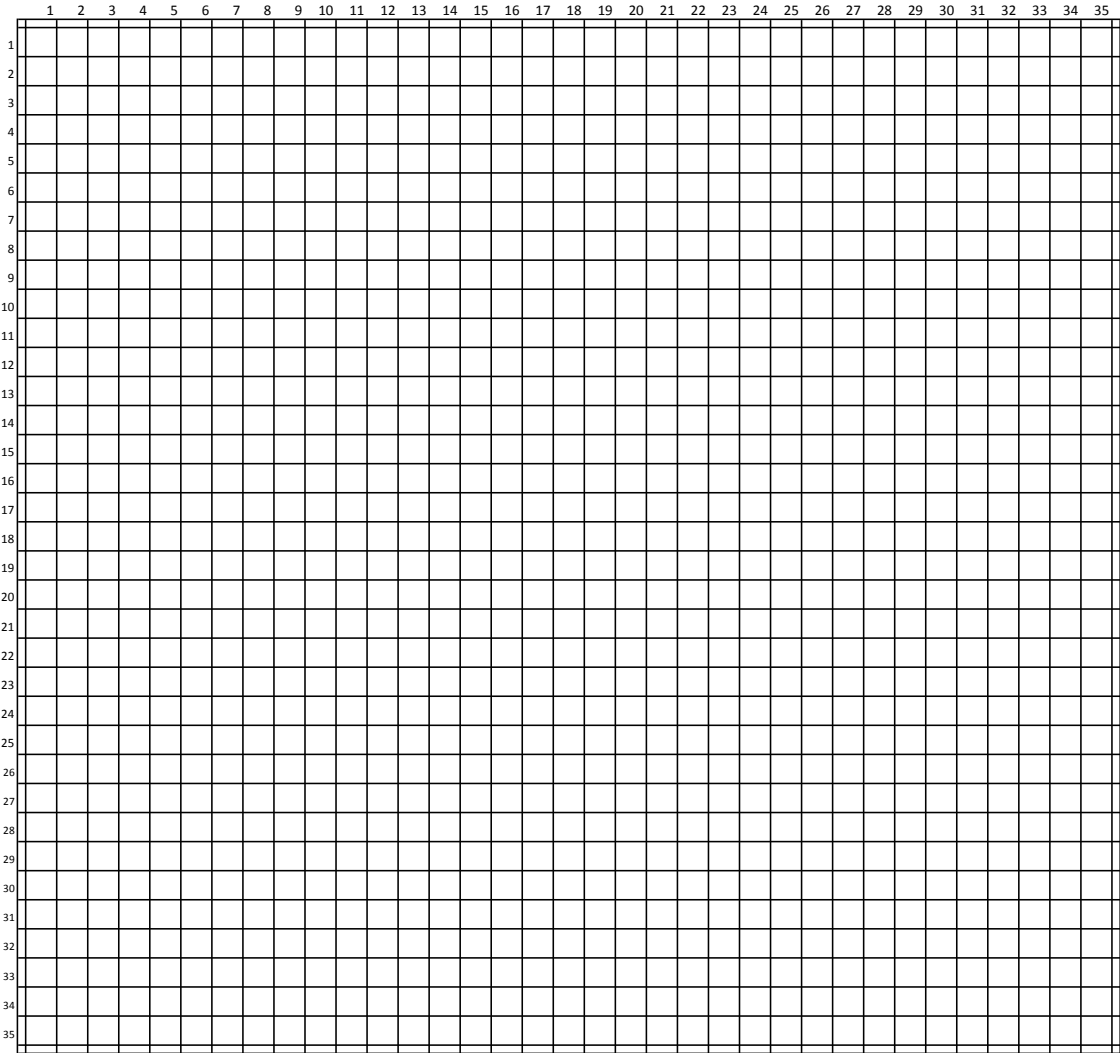
- 3/4" x 12" right loop (package of 10)
- 1 1/2" x 12" (package of 10)

#### Borders:

- 2" x 6" (package of 4)
- 2" x 3" (package of 4)
- 2" x 12" with loops (package of 10)
- 2" x 12" with tabs (package of 10)

#### Border Corners:

- Outside (package of 4)
- Inside (package of 4)



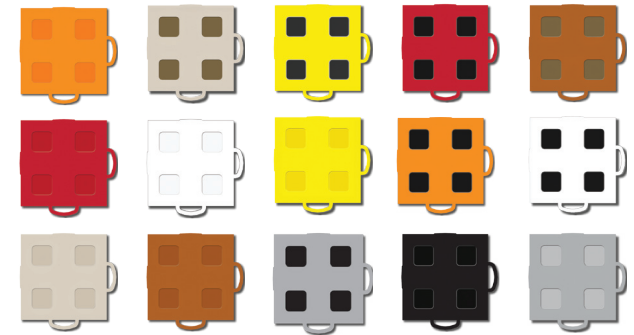


## TechFloor™

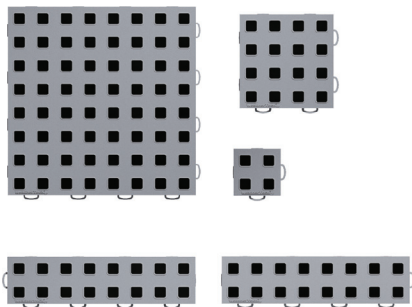
### The Easy to Install Instructions

1. Accurately measure the floor surface to determine the amount of tiles required. Make sure to consider custom patterns or borders as you calculate the number of tiles.
2. Start with a clean, dry floor. Remove any debris.
3. Begin installation by laying the tab side towards the edge of chosen flooring area, leaving the loops exposed.
4. Align the tabs of the next tile with the loops of the previously installed tile.
5. Apply pressure at each loop with your thumb or a small rubber mallet until piece snaps into place.
6. Finish tiled area with appropriate border tiles and border corners.

#### Available Color Options



#### Floor Tiles



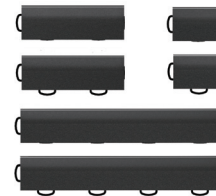
- 12" x 12" Tile
- 6" x 6" Tile
- 3" X 3" Tile
- 3" x 12" Left Loop Tile
- 3" x 12" Right Loop Tile

#### Trim Tiles



- 1 1/2" Border Trim Tile
- 3/4" X 12 Border Trim Tile

#### Borders



- 2" x 12" Border
- 2" x 6" Border
- 2" x 3" Border

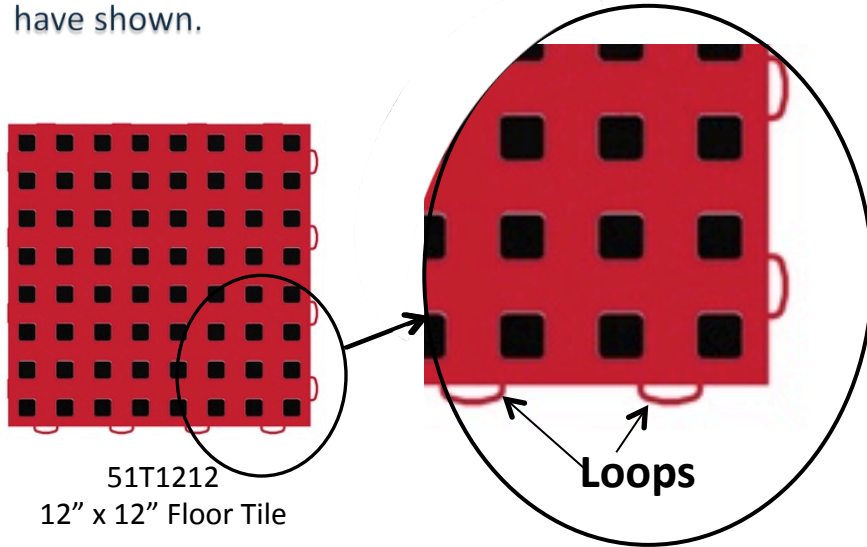
#### Border Corners



- 2" x 2" Border Corner
- Inside Tab-Tab
- Inside Loop-Tab
- Inside Tab-Loop
- Inside Loop-Loop

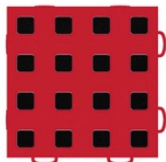
# Installation Instructions

TechFloor™ Modular tiles are custom engineered to tightly lock together and create a seamless look. How the tiles are oriented as they are installed does not matter, as long as the **loops for every tile, always point in the same direction**. For ease of installation we recommend that the “loops” be to the bottom, and right as we have shown.

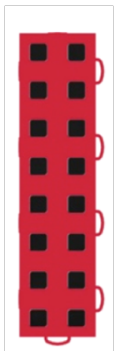


NOTE that the **Loops** are oriented at the bottom and right side of all parts

51T1212  
12" x 12" Floor Tile



51T66  
6" x 6"  
Floor Tile



51T312LL  
3" x 12"  
Floor Tile  
“Left Loop”

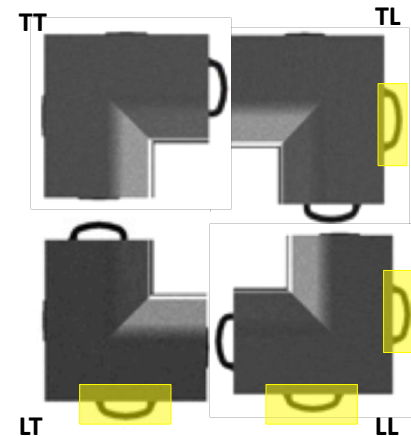


51T312RL  
3" x 12"  
Floor Tile  
“Right Loop”



51T33  
3" x 3"  
Floor Tile

**Inside Border Corners** are sold as a set of 4 and are each uniquely different. These can be difficult to select. If you find yourself going around more than one inside corner or obstacle on your floor, be sure to order enough inside corners to do the job!



**NOTE:** These corners are oriented the same as the tiles at the left. When selecting inside corners the loops to consider are those on the outside of the part.

# Trim & Border Pieces

## 12" Border Trim

Choice of Loop or Tab versions. Sold as a box of 10.

Borders with "Loops" are installed against the "tab" edge of tile. Borders with "Tabs" are installed against the "loop" edge of tile.



### 51B212L BK

2" x 12" Border Piece with Loops

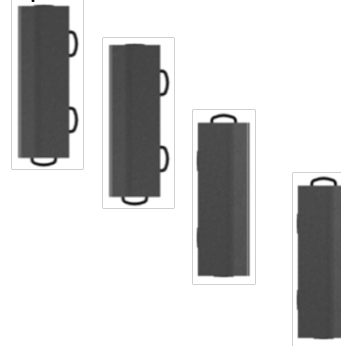


### 51B212T BK

2" x 12" Border Piece with Tabs

## 51B26 BK

6" Borders are sold as a set of 4 and include 2 loop pieces, and 2 tab pieces.



## 51BIC SET4 BK

Border Inside Corners are each uniquely different, and are sold as a set of 4.

TT Tab-Tab



TL Tab-Loop



LT Loop-Tab



LL Loop-Loop

## 12" Trim Tiles

Must specify color. Sold as a box of 10.



### 51BT15 (specify color)

1½" x 12" Trim Tile

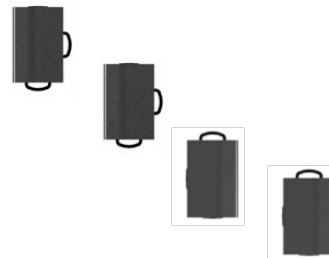


### 51BT75 (specify color)

¾" x 12" Trim Tile

## 51B23 BK

3" Borders are sold as a set of 4 and include 2 loop pieces, and 2 tab pieces.



## 51BC22 BK

Border Outside Corners are sold as a set of 4.

